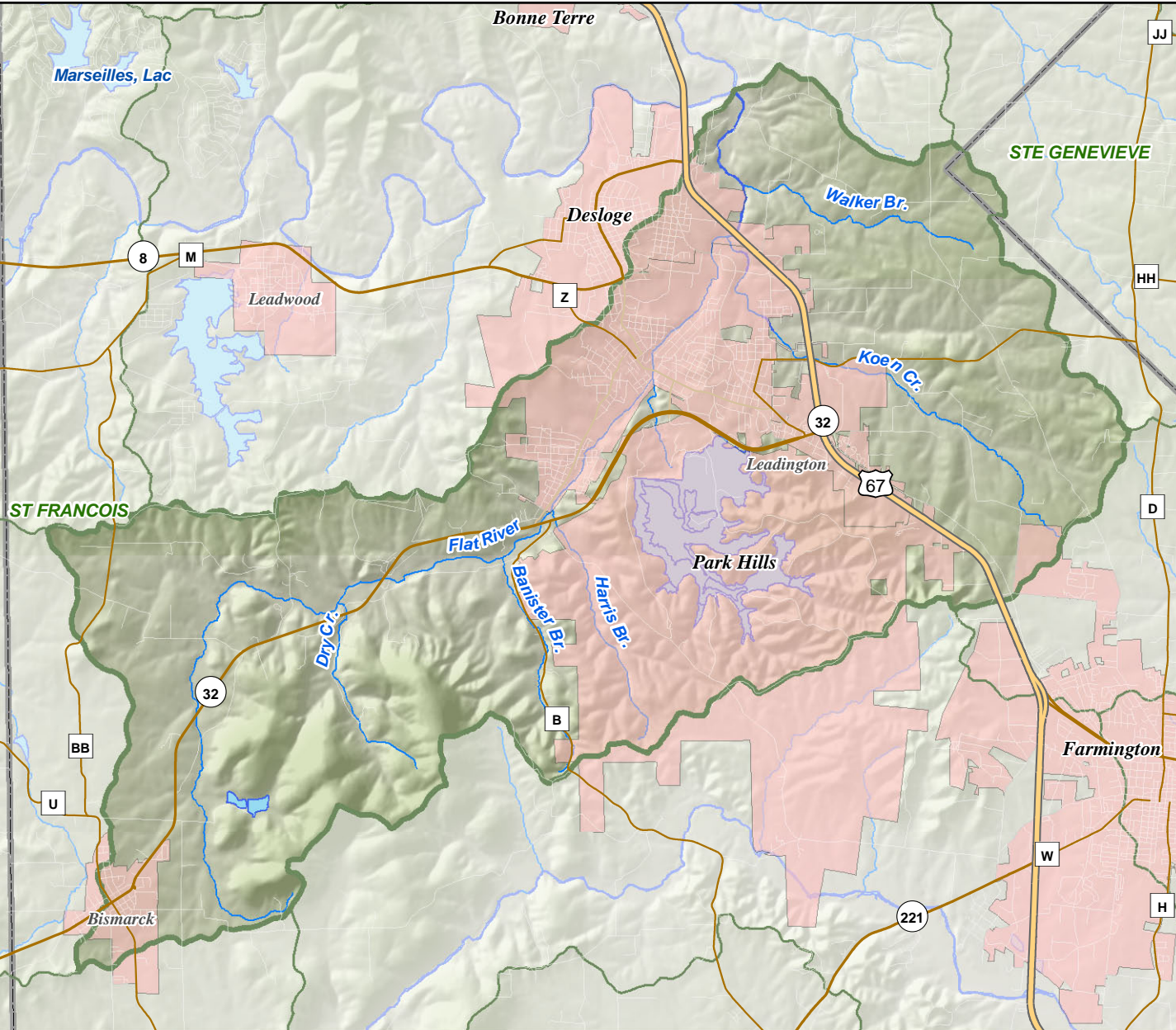


Flat River

12-Digit Hydrologic Unit: 071401040108

30,449 Acres (47.58 Sq. Miles)



- | | |
|--------------------------|-------------------------|
| Hydrologic Unit Boundary | Interstate |
| Streams | U.S. Highway |
| Water | State Highway |
| Cities and Towns | Missouri Lettered Route |
| County Boundary | Other Principle Route |

Map Date: Jan 28, 2010



Sources: 12-Digit Hydrologic Units - NRCS, 2009;
Streams, Water - USGS NHD, 2009; Cities, Counties -
U.S. Census Bureau, 2008; Highways - MoDOT, 2009.

